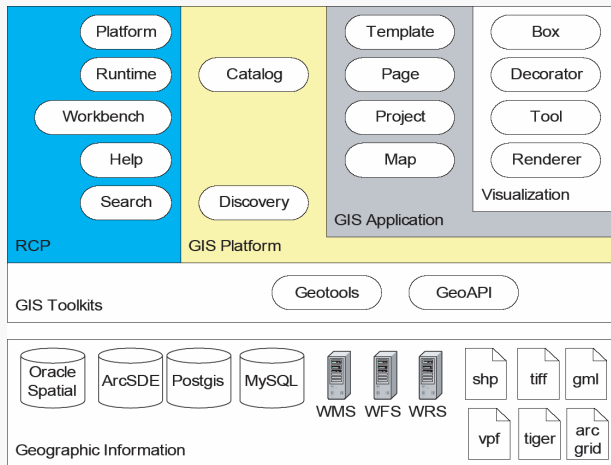


uDig is Extensible

Using the Eclipse RPC allows uDig to offer:

- Managed code updates online
- A robust framework for plug-in/extension development
- Native UI controls for a consistent look and feel
- An industry-standard development environment



For More Information

Please contact Refrations Research for more information on the uDig project.

Paul Ramsey - President

pramsey@refrations.net

Phone: (250) 383 3022

Fax: (250) 383 2140



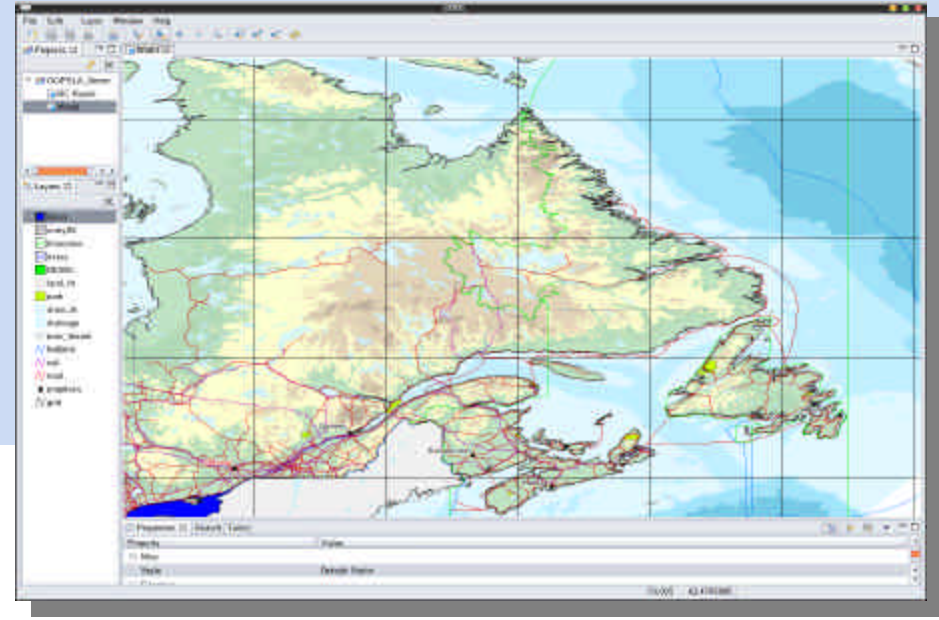
uDig

User-friendly Desktop Internet GIS

Integrated
Technologically Advanced
Open Source
Widely Supported
Standards-Based
Extensible

uDig

User-friendly Desktop Internet GIS



What is uDig?

The User-friendly Desktop Internet GIS (uDig) is a desktop application framework that brings together internet, database and file-based spatial data into an easy-to-use, visual GIS program.

uDig is Integrated

The uDig philosophy is to treat all data layers equally. In an Internet integrated environment, it should not matter whether a layer is local or remote, file or database.

Every layer can be:

- re-ordered
- styled
- printed
- edited
- rendered transparent
- reprojected

uDig supports layers from:

- OGC WMS and WFS
- ESRI SHP and ArcSDE
- Post-GIS
- Oracle Spatial
- TIF, PNG and JPG

uDig is Advanced

uDig uses the latest software development technologies, such as those listed below, to provide a flexible, future-proof platform.

- Eclipse Rich Client from IBM
- Eclipse Modeling Framework from IBM
- Eclipse Graphical Framework from IBM
- Java 1.5 from Sun Microsystems
- Java Advanced Imaging from Sun Microsystems
- Java Image IO from Sun Microsystems

uDig is Open Source

uDig is distributed under the open source LGPL licence. The development process is open, with a publicly readable source repository, mailing lists, IRC channel, and development plan. uDig in turn leverages other open source projects:

- Eclipse
- GeoTools
- JTS
- Apache
- PostGIS
- And others

uDig is Widely Supported

Refractions Research provides per-seat support contracts, developer support, developer training and ongoing maintenance for the uDig platform.

The first release of uDig is being developed in part with the support of GeoConnections, a national partnership initiative to build the Canadian Geospatial Data Infrastructure (CGDI), and make Canada's geospatial information accessible on-line (www.cgdi.ca). uDig will provide a new tool for wider use of the CGDI.



<http://www.geoconnections.org/>

uDig is Standards-Based

uDig supports both official and de facto standards to ensure compatibility with as many technical environments as possible:

- OGC WMS
- OGC WFS
- OGC SLD
- OGC GML 2.1
- GeoAPI
- OGC Catalog / ebRIM
- OGC WebMap Context
- ESRI ArcXML
- ESRI Shapefile
- ESRI WKT Projections
- OGC SFSQL

uDig is Extensible

uDig is implemented in the Eclipse Rich Client Platform (RCP), a framework for modular application building from IBM.

(continued over...)